

Valid Recipient Verification

It's a widely suggested best practice to reject mail addressed to non-existent recipients at the gateway level.

This will aid the spam block rate and keep your license usage count accurate.

In this section we will describe how to configure recipient verification on our Libraesva ESG.

The Valid Recipient List is available under menu *System->Valid Recipient Verification*.

LIBRAESVA
EMAIL SECURITY

Home System Reports Quarantine Search

Appliance Mail Transport Content Analysis Authentication High Availability

Valid Recipient Verification

Libra Esva will relay emails for all defined domains under Relay Configuration menu.
For all domains where you selected "Valid Recipient List" as recipient verification method, the following email list will be applied:

Valid Recipient List LDAP Import Office 365 Import

Valid Recipient List

New Search Export Delete selected Text Import Delete All Entries Help

<input type="checkbox"/>	Valid Recipient	
<input type="checkbox"/>	archiver@365demonstration.com	
<input type="checkbox"/>	odrake@365demonstration.com	
<input type="checkbox"/>	devel1@365demonstration.com	
<input type="checkbox"/>	devel@365demonstration.com	
<input type="checkbox"/>	ebrook@365demonstration.com	
<input type="checkbox"/>	pparker@365demonstration.com	
<input type="checkbox"/>	sales@365demonstration.com	

75 1 Displaying rows 1 to 7 of 7

This list of valid email addresses, can be populated in different ways:

- Manually: by adding each accepted address one by one
- Text Import: from a text file import
- LDAP Import: via an LDAP Server Connection
- O365 Import: via O365 connector
- Google Import: via O365 connector

The first method is convenient only for a very small deployment with a few static email addresses.

The second one is suitable in case you have a static email address list to import once; any update is manual.

The third one is the more advanced and allows synchronization between local valid recipient list and an LDAP server, like Exchange, Domino, Zimbra, etc.

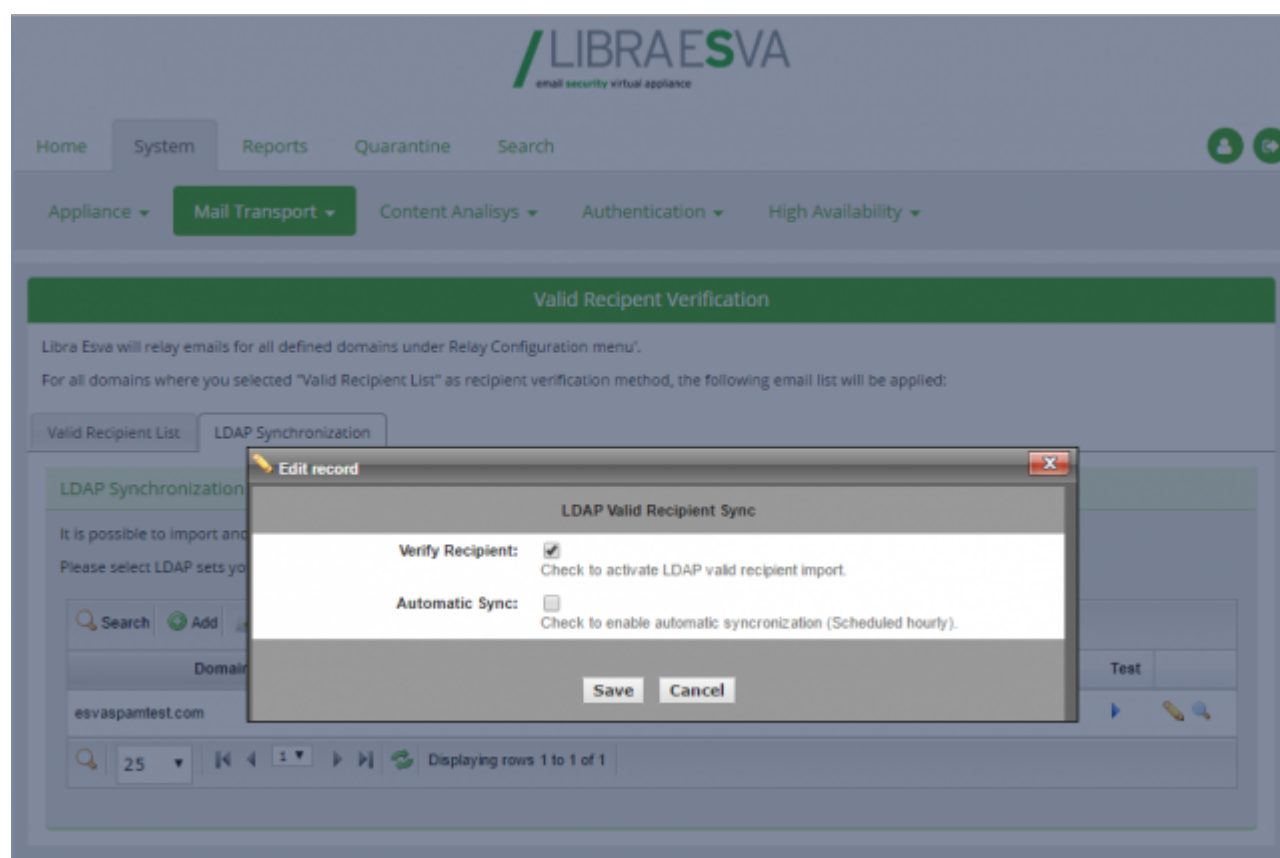
The fourth one allows synchronization between local valid recipient list and an Azure Active Directory on an O365 environment.

The fifth one allows synchronization between local valid recipient list and an your Google Organization.

LDAP Import

To use the LDAP Synchronization you must have at least one valid LDAP Set defined.

Next Press Tab LDAP Synchronization, and edit the LDAP set:



From this dialog you must select Verify Recipient and optionally Automatic Sync, if you want

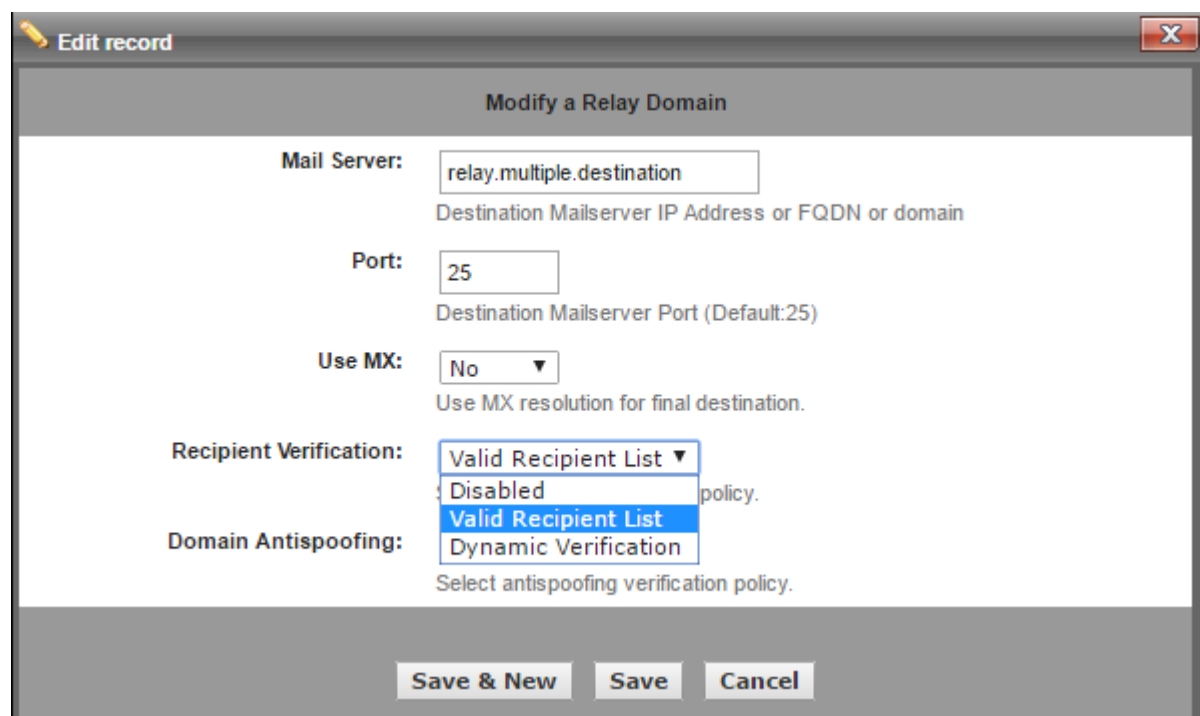
to keep your list automatically synchronized with your LDAP Server.

Finally press button **LDAP Import**.

Once you have populated your list apply it to your domain by selecting menu:

System->Relay Configuration->Domain Relay

Edit a domain and select "Valid Recipient List".



The screenshot shows a window titled "Edit record" with a sub-header "Modify a Relay Domain". The window contains several configuration fields:

- Mail Server:** A text input field containing "relay.multiple.destination". Below it is the text "Destination Mailserver IP Address or FQDN or domain".
- Port:** A text input field containing "25". Below it is the text "Destination Mailserver Port (Default:25)".
- Use MX:** A dropdown menu with "No" selected. Below it is the text "Use MX resolution for final destination."
- Recipient Verification:** A dropdown menu with "Valid Recipient List" selected. Below it is the text "policy."
- Domain Antispoofing:** A dropdown menu with "Dynamic Verification" selected. Below it is the text "Select antispoofting verification policy."

At the bottom of the window, there are three buttons: "Save & New", "Save", and "Cancel".

O365 Import

Two steps are mandatory before this configuration:

- O365 Connector
- O365 configured domain in Domain Relay

Here you can chose to test the connector

Valid Recipient Verification

Libra Esva will relay emails for all defined domains under Relay Configuration menu'.

For all domains where you selected "Valid Recipient List" as recipient verification method, the following email list will be applied:

Valid Recipient List LDAP Import Office 365 Import

Office 365 Import

It is possible to import and keep synchronized the valid recipient list with Microsoft Office 365.

Please select the O365 Connectors you wish to use to populate the Valid Recipient List:

Domain	Description	Office 365 Tenant	Verify Recipient	Test
365demonstration.com	SJW Test	demonstrationlab.onmicrosoft.com	Yes	

75 | 1 | Displaying rows 1 to 1 of 1

Edit record

O365 Valid Recipients Import

Verify Recipient: Check to activate O365 valid recipient import.

Save

Cancel

Google Import

Two steps are mandatory before this configuration:

- Google Connector
- Google configured domain in Domain Relay

Here you can chose to test the connector

Valid Recipient Verification

Libraesva ESG will relay emails for all defined domains under Relay Configuration menu'.
 For all domains where you selected "Valid Recipient List" as recipient verification method, the following email list will be applied:

Valid Recipient List LDAP Import Office 365 Import **Google Import**

Google Import

It is possible to import and keep synchronized the valid recipient list with Google.
 Please select the Google Connectors you wish to use to populate the Valid Recipient List (Automatic Sync is scheduled hourly):

Description	GSuite administrator email	Verify Recipient	Test
LibraesvaGsuite	gsuitedemonstration@gsuitedemonstration.com	Yes	

75 1 Displaying rows 1 to 1 of 1

Edit record ✕

Google Valid Recipients Import

Verify Recipient: Check to activate google valid recipient import.

×**NOTE:** If you don't enable Verify Recipient option, you will not be able to find Groups on the valid recipient list.

×**NOTE:** Remember to populate your Valid Recipient List **BEFORE** configuring and applying it to your domain, or all received emails will be rejected until you populated the valid recipient list!